

# BUILDING TYPES

The Sunoco building supports the quality image of your products and services.

Although the buildings share many attributes that bring instant driver recognition of Sunoco - for example, signage, colors and dispensers - there are several different building types shown within this site.

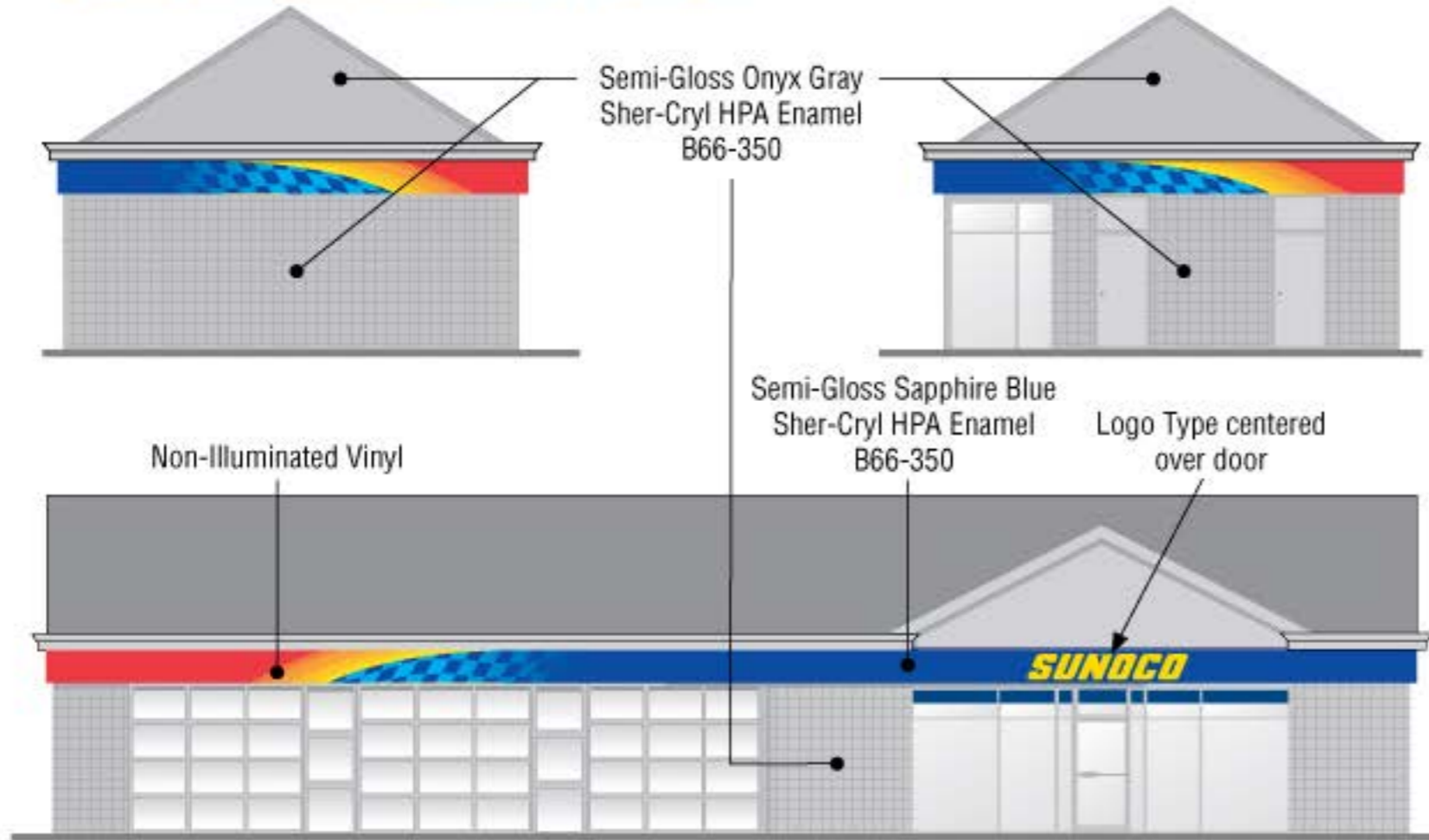
Your building needs to meet Sunoco specifications to portray a consistent image.



Click the building structure closest to yours for more details.

**PAINT INFORMATION**

# Colonial Traditional



The standards outlined here should be used with this type of building. Where visible to motorists, the rear and side of the building should be painted in the same color as the corresponding surfaces on the front.

If these colors are not available at a local Sherwin Williams retail store, call 1-800-4Sherwin for assistance in locating the nearest Sherwin Williams Service Center, or [www.sherwin-williams.com](http://www.sherwin-williams.com)

<b>SHERWIN-WILLIAMS PAINT SPECIFICATIONS</b>	
<b>Two Component, Acrylic Urethane, High Performance Acrylic Urethane</b>	
Onyx Gray Sher-Cryl HPA Enamel B66-350 Semi-Gloss	Canopy columns, poles, island forms, steel door and general maintenance and touch up of canopy columns, curbs, steel island forms, poles, guard rails and building exterior
Sapphire Blue Sher-Cryl HPA Enamel B66-350 Semi-Gloss	Canopy fascia and building band
Sunoco White Sher-Cryl HPA Enamel B66-350 Semi-Gloss	Canopy underside

▶ [RETURN TO BUILDINGTYPES PAGE](#)

## Modern Traditional



Horizon graphics are 36" band centered within the total height of existing mansard (if height is over 36")  
 Gray stripes are used to fill in the top and bottom.



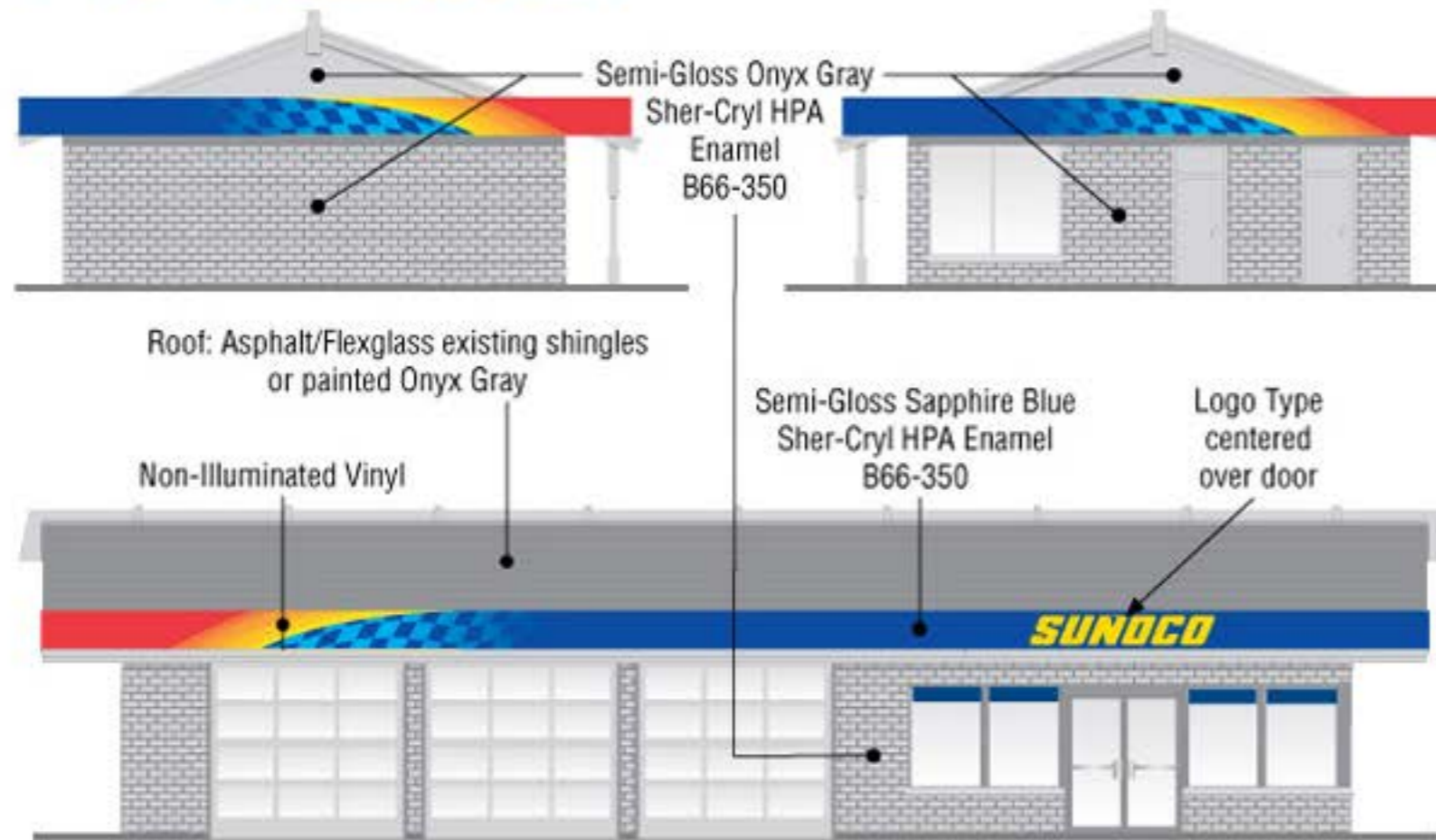
The standards outlined here should be used with this type of building. Where visible to motorists, the rear and side of the building should be painted in the same color as the corresponding surfaces on the front.

If these colors are not available at a local Sherwin Williams retail store, call 1-800-4Sherwin for assistance in locating the nearest Sherwin Williams Service Center, or [www.sherwin-williams.com](http://www.sherwin-williams.com)

<b>SHERWIN-WILLIAMS PAINT SPECIFICATIONS</b>	
Two Component, Acrylic Urethane, High Performance Acrylic Urethane	
Onyx Gray Sher-Cryl HPA Enamel B66-350 Semi-Gloss	Canopy columns, poles, island forms, steel door and general maintenance and touch up of canopy columns, curbs, steel island forms, poles, guard rails and building exterior
Sapphire Blue Sher-Cryl HPA Enamel B66-350 Semi-Gloss	Canopy fascia and building band
Sunoco White Sher-Cryl HPA Enamel B66-350 Semi-Gloss	Canopy underside

▶ [RETURN TO BUILDINGTYPES PAGE](#)

## T-16 Traditional



The standards outlined here should be used with this type of building. Where visible to motorists, the rear and side of the building should be painted in the same color as the corresponding surfaces on the front.

If these colors are not available at a local Sherwin Williams retail store, call 1-800-4Sherwin for assistance in locating the nearest Sherwin Williams Service Center, or [www.sherwin-williams.com](http://www.sherwin-williams.com)

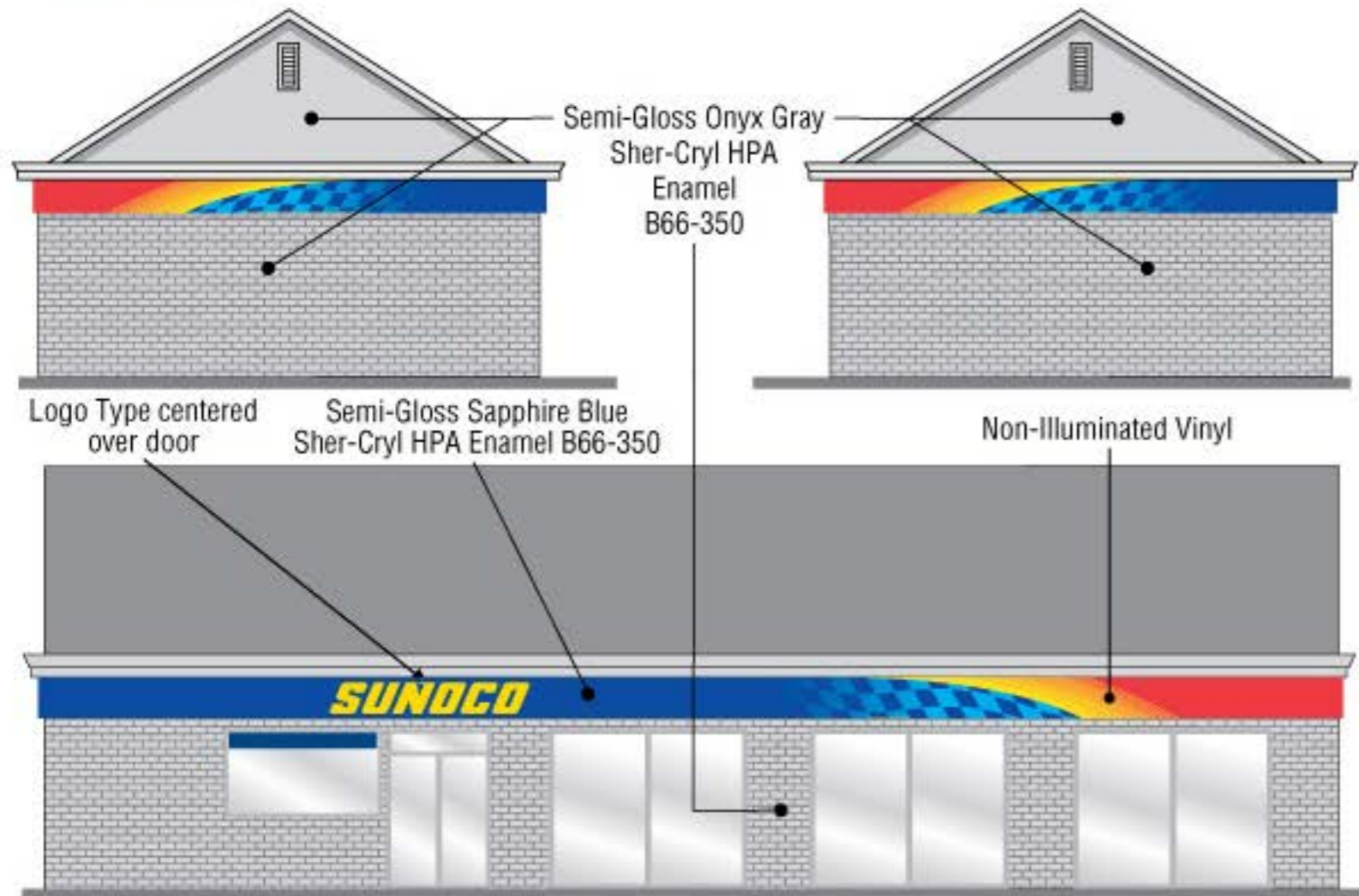
### SHERWIN-WILLIAMS PAINT SPECIFICATIONS

#### Two Component, Acrylic Urethane, High Performance Acrylic Urethane

Onyx Gray Sher-Cryl HPA Enamel B66-350 Semi-Gloss	Canopy columns, poles, island forms, steel door and general maintenance and touch up of canopy columns, curbs, steel island forms, poles, guard rails and building exterior
Sapphire Blue Sher-Cryl HPA Enamel B66-350 Semi-Gloss	Canopy fascia and building band
Sunoco White Sher-Cryl HPA Enamel B66-350 Semi-Gloss	Canopy underside

▶ [RETURN TO BUILDINGTYPES PAGE](#)

# C-Store



The standards outlined here should be used with this type of building. Where visible to motorists, the rear and side of the building should be painted in the same color as the corresponding surfaces on the front.

If these colors are not available at a local Sherwin Williams retail store, call 1-800-4Sherwin for assistance in locating the nearest Sherwin Williams Service Center, or [www.sherwin-williams.com](http://www.sherwin-williams.com)

<b>SHERWIN-WILLIAMS PAINT SPECIFICATIONS</b>	
<b>Two Component, Acrylic Urethane, High Performance Acrylic Urethane</b>	
Onyx Gray Sher-Cryl HPA Enamel B66-350 Semi-Gloss	Canopy columns, poles, island forms, steel door and general maintenance and touch up of canopy columns, curbs, steel island forms, poles, guard rails and building exterior
Sapphire Blue Sher-Cryl HPA Enamel B66-350 Semi-Gloss	Canopy fascia and building band
Sunoco White Sher-Cryl HPA Enamel B66-350 Semi-Gloss	Canopy underside

▶ [RETURN TO BUILDINGTYPES PAGE](#)