

# Canopies & Islands

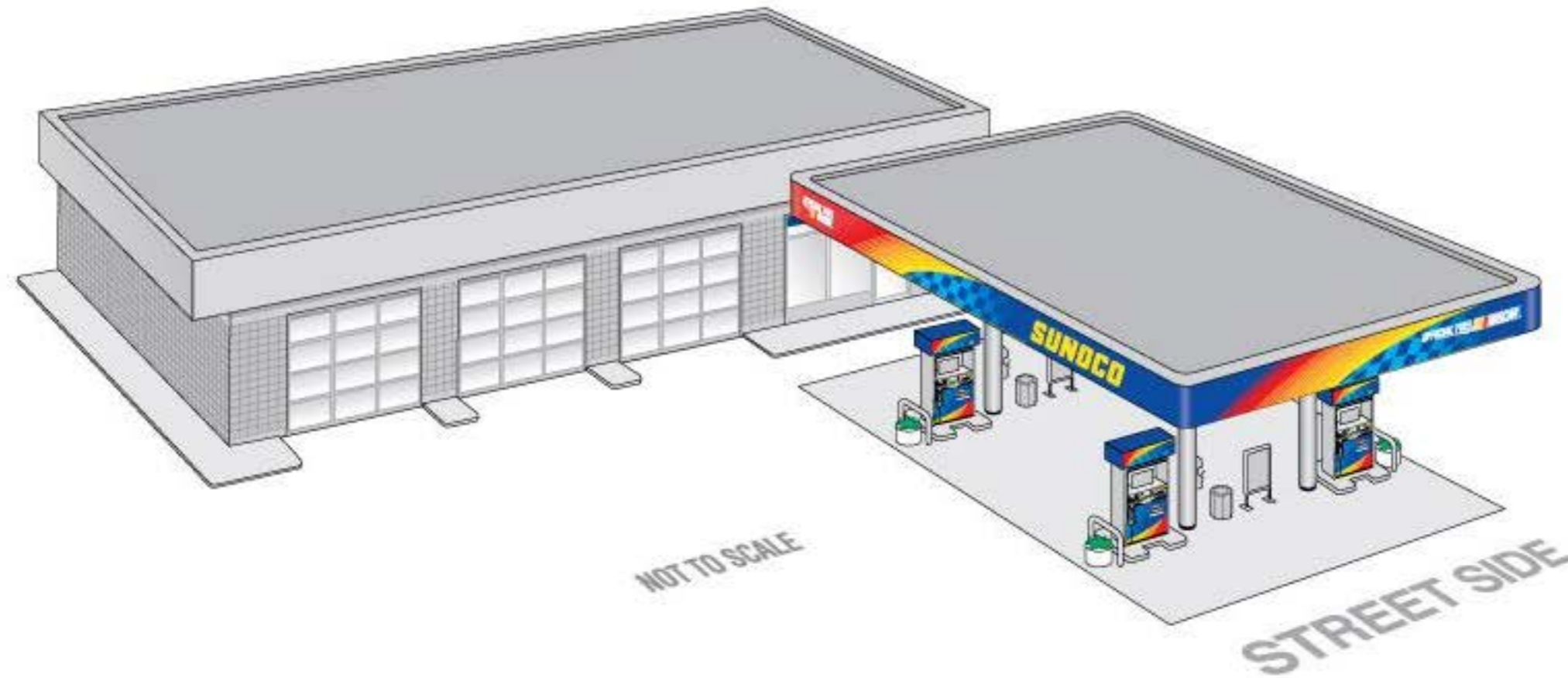
- ▶ Configuration 1) 32' x 47'
- ▶ Configuration 2) 21' x 32'
- ▶ Configuration 3) 32' x 123'
- ▶ Configuration 4) 24' x 99'

For additional information,  
contact [TKAHMER@sunocoinc.com](mailto:TKAHMER@sunocoinc.com)

## PAINT INFORMATION

[CLICK HERE FOR BUILDING IMAGE SPECIFICATIONS](#)

**Configuration 1: 32' x 47'**



[CLICK HERE  
FOR CANOPY  
IMAGE  
SPECIFICATIONS](#)

# Canopies & Islands

32' x 47'



LEFT SIDE ELEVATION



RIGHT SIDE ELEVATION



STREET SIDE ELEVATION

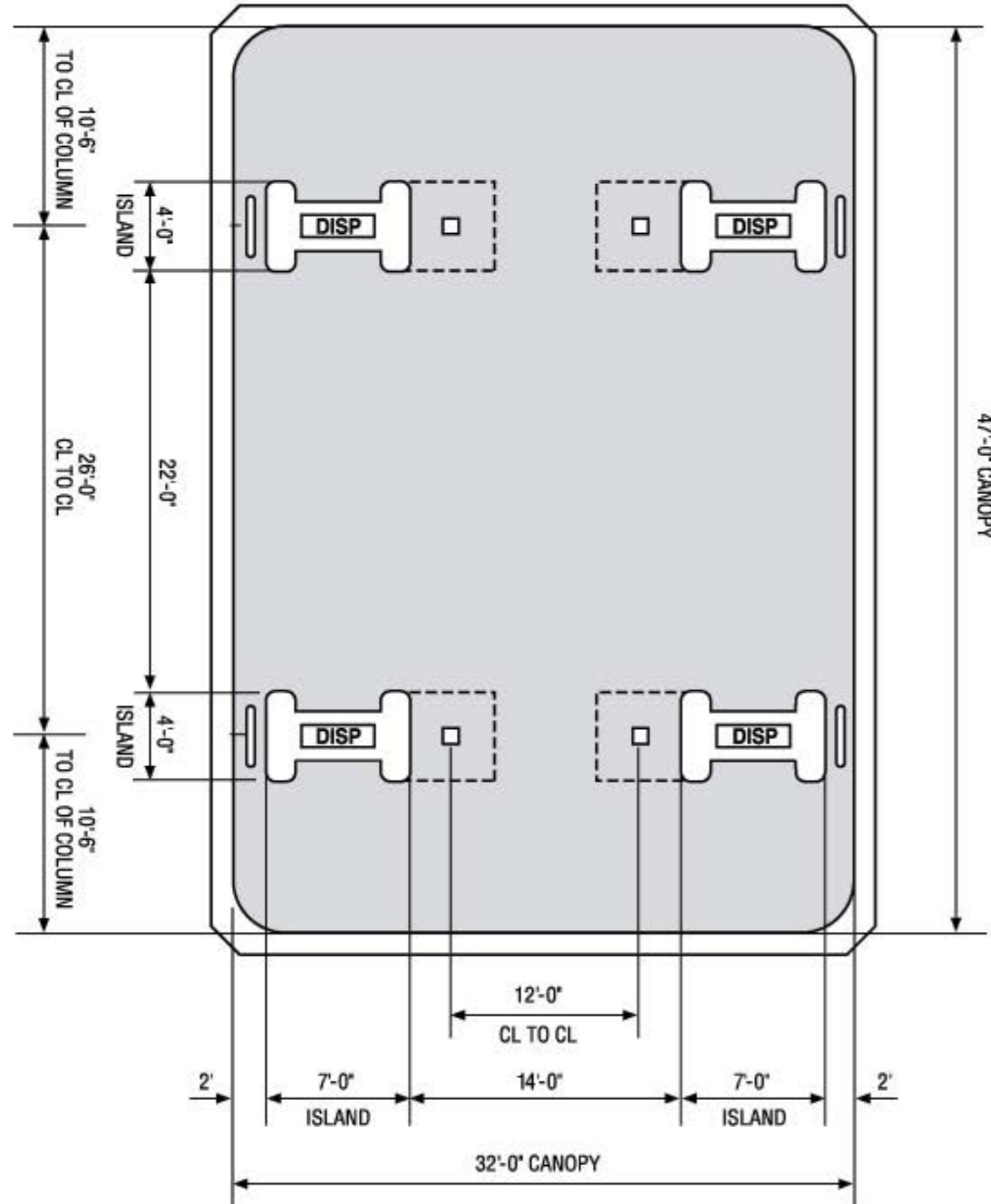


STORE SIDE ELEVATION

▶ [GO TO ISLAND LAYOUTS & MEASUREMENTS](#)

▶ [RETURN TO CANOPIES & ISLANDS PAGE](#)

**32' x 47'**  
**REPLACES 32' x 49'**



▶ **RETURN TO CANOPIES & ISLANDS PAGE**

[CLICK HERE FOR BUILDING IMAGE SPECIFICATIONS](#)

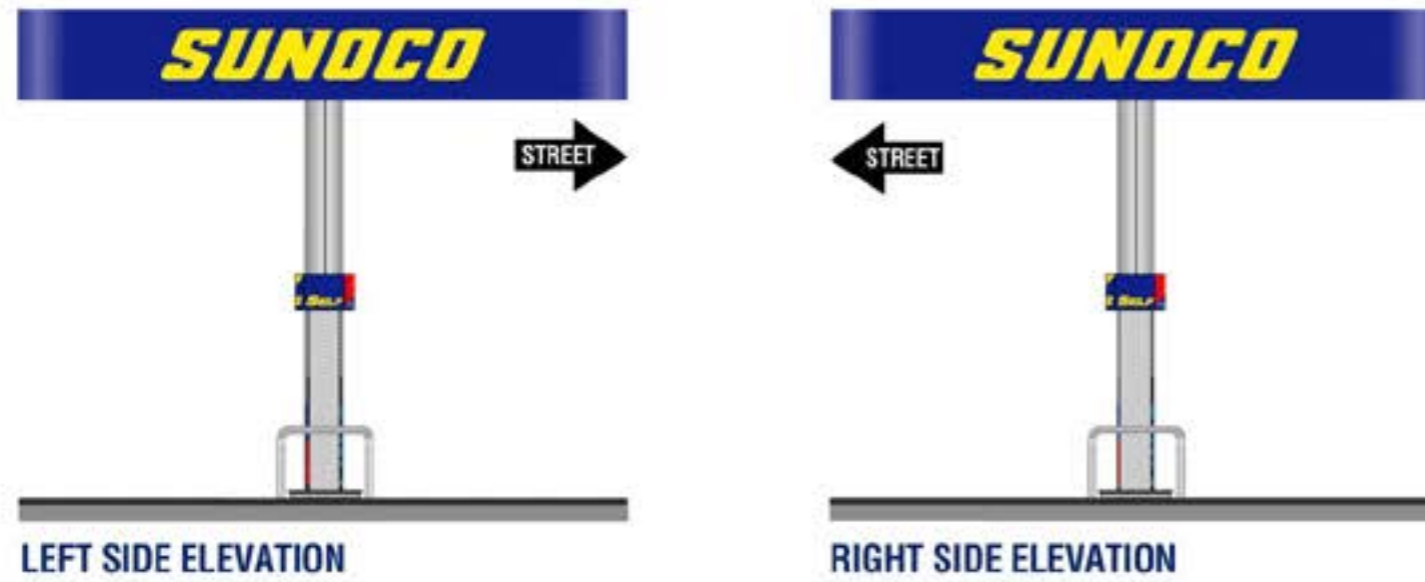
**Configuration 2: 21' x 32'**



[CLICK HERE  
FOR CANOPY  
IMAGE  
SPECIFICATIONS](#)

# Canopies & Islands

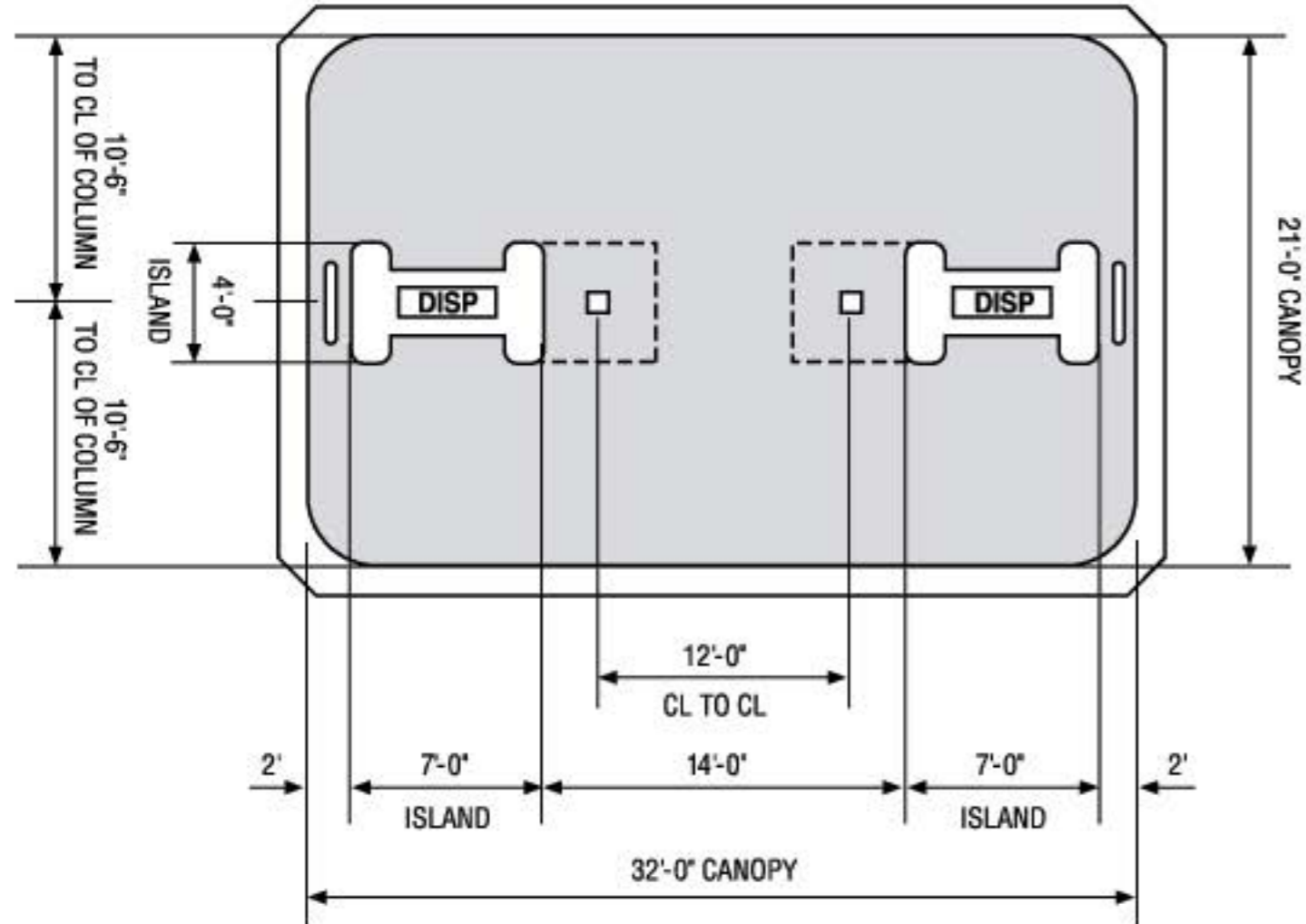
21' x 32'



▶ GO TO **ISLAND**  
LAYOUTS & MEASUREMENTS

▶ RETURN TO **CANOPIES & ISLANDS** PAGE

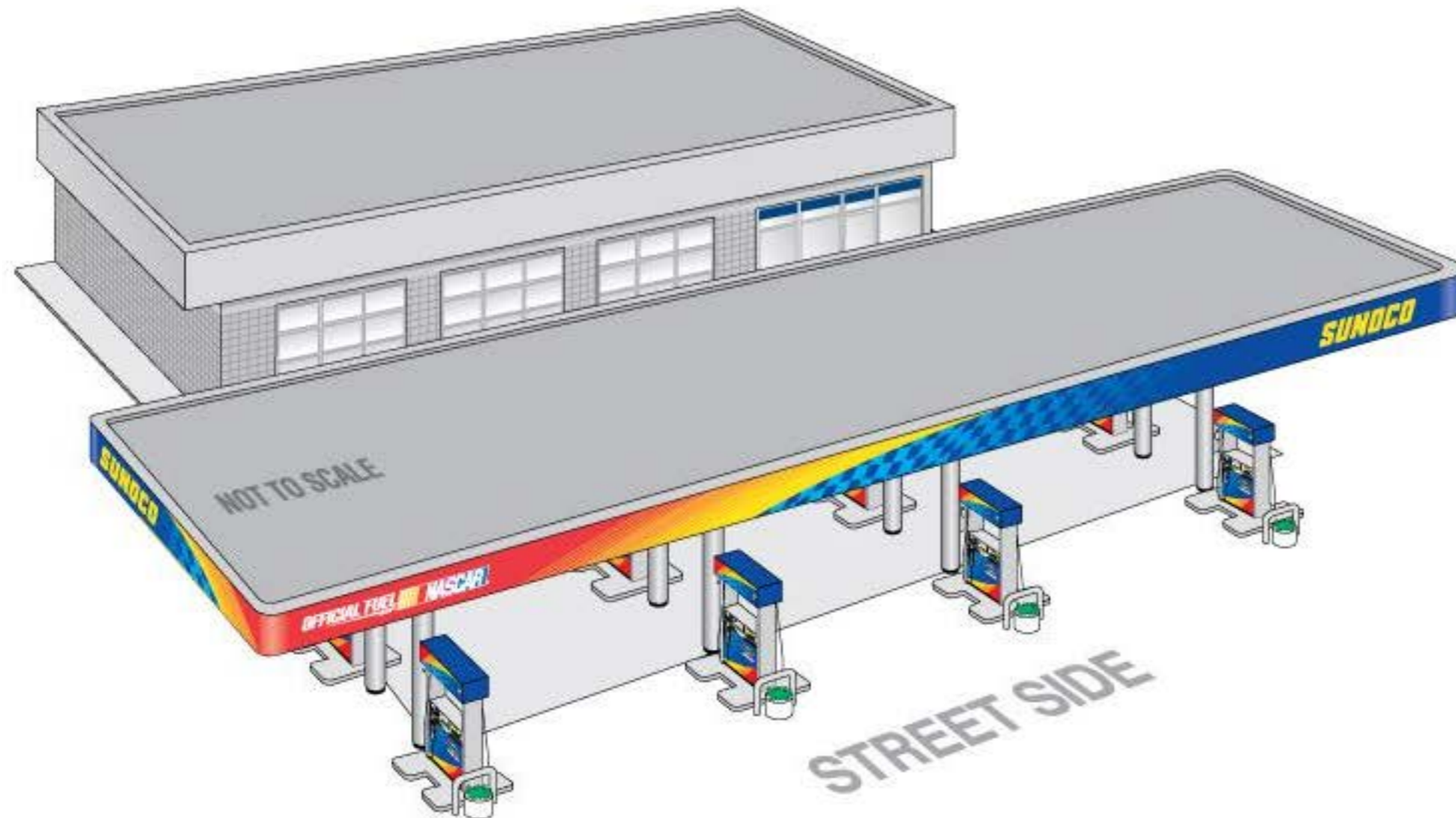
**21' x 32'**  
**REPLACES 24' x 32'**



▶ **RETURN TO CANOPIES & ISLANDS PAGE**

[CLICK HERE FOR BUILDING IMAGE SPECIFICATIONS](#)

**Configuration 3: 32' x 123'**

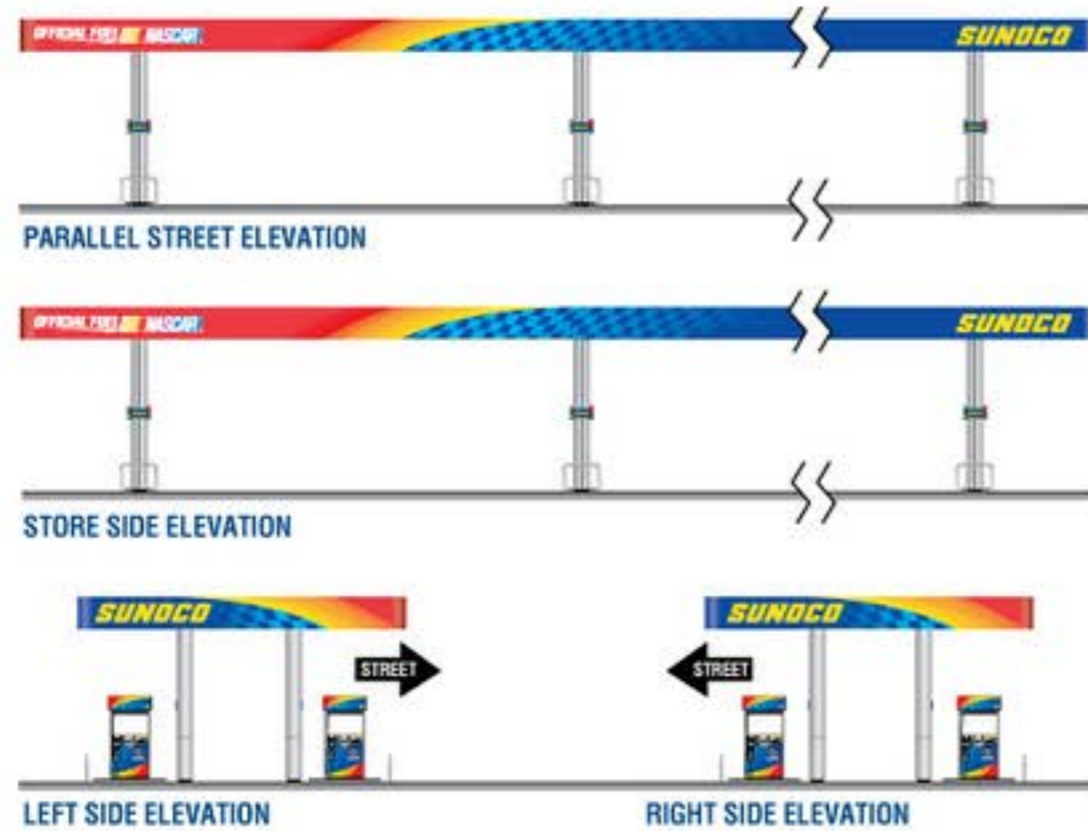


[CLICK HERE  
FOR CANOPY  
IMAGE  
SPECIFICATIONS](#)



# Canopies & Islands

32' x 123'



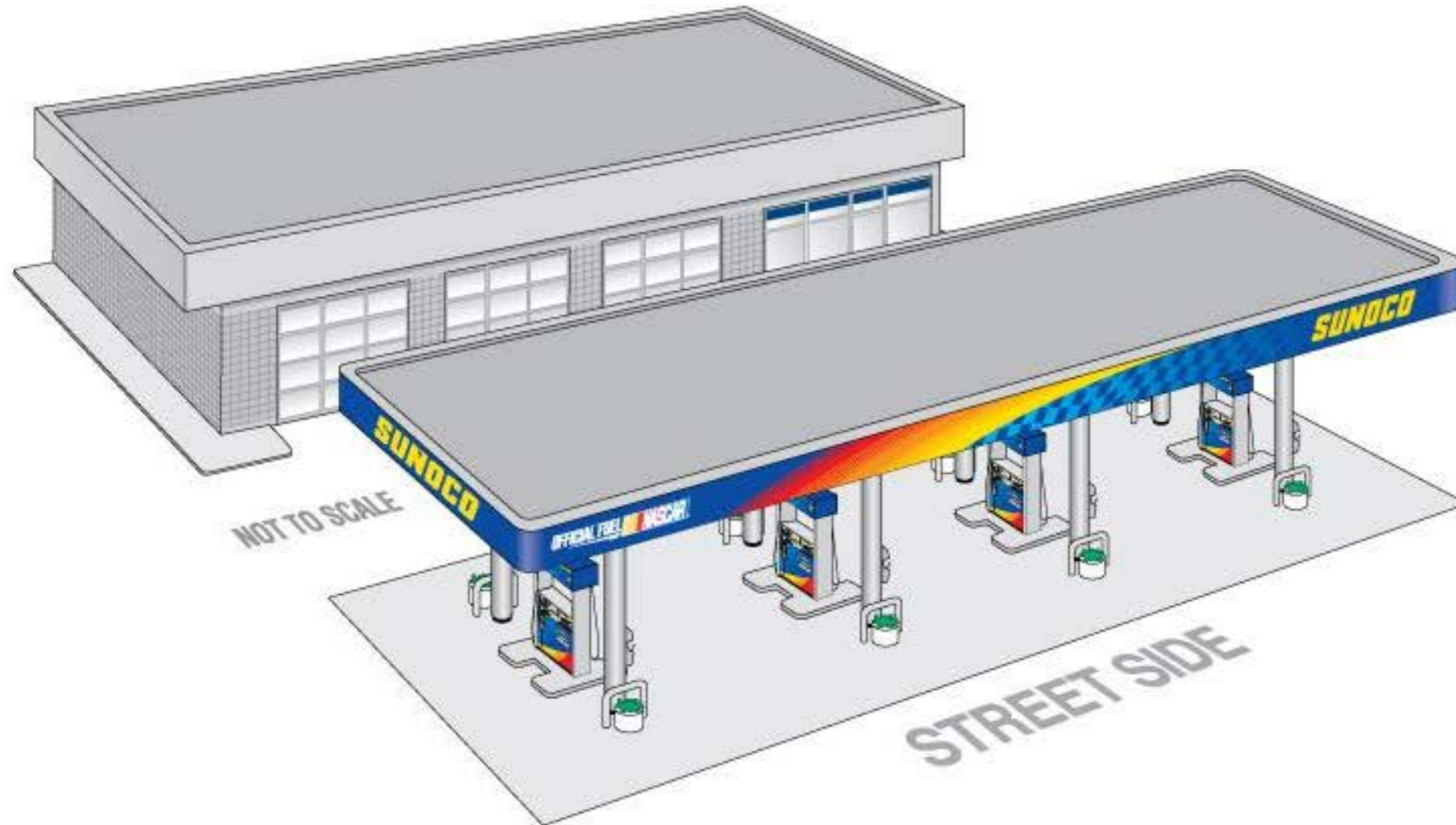
▶ GO TO **ISLAND**  
LAYOUTS & MEASUREMENTS

▶ RETURN TO **CANOPIES & ISLANDS** PAGE



[CLICK HERE FOR BUILDING IMAGE SPECIFICATIONS](#)

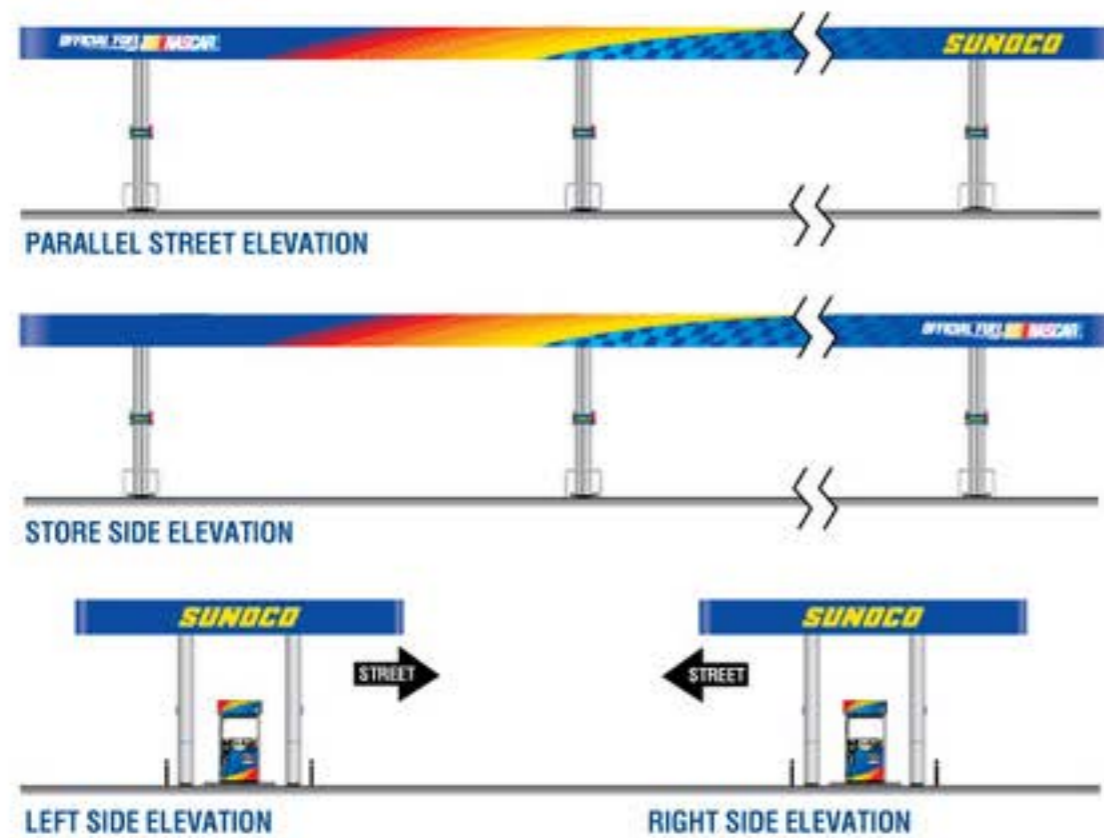
**Configuration 4: 24' x 99'**



[CLICK HERE  
FOR CANOPY  
IMAGE  
SPECIFICATIONS](#)

# Canopies & Islands

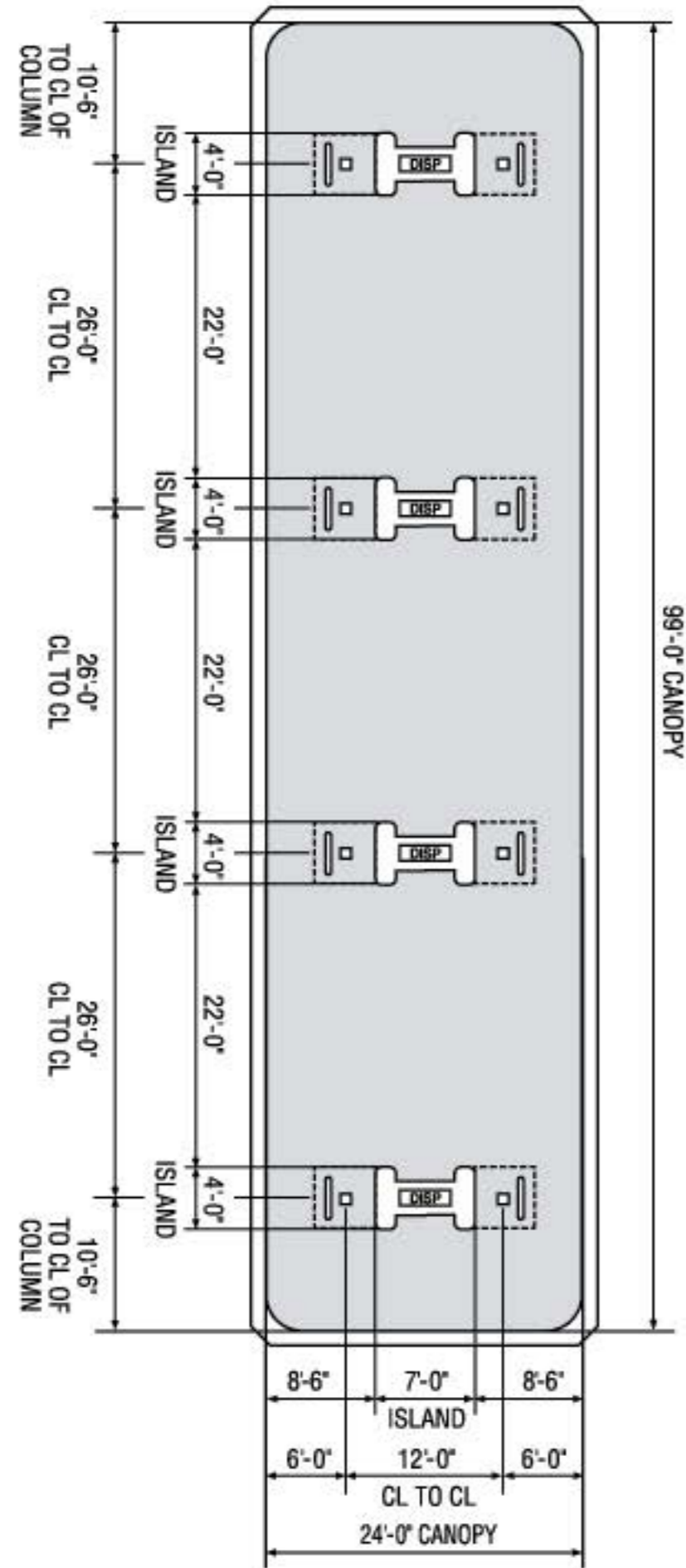
24' x 99'



▶ GO TO **ISLAND**  
LAYOUTS & MEASUREMENTS

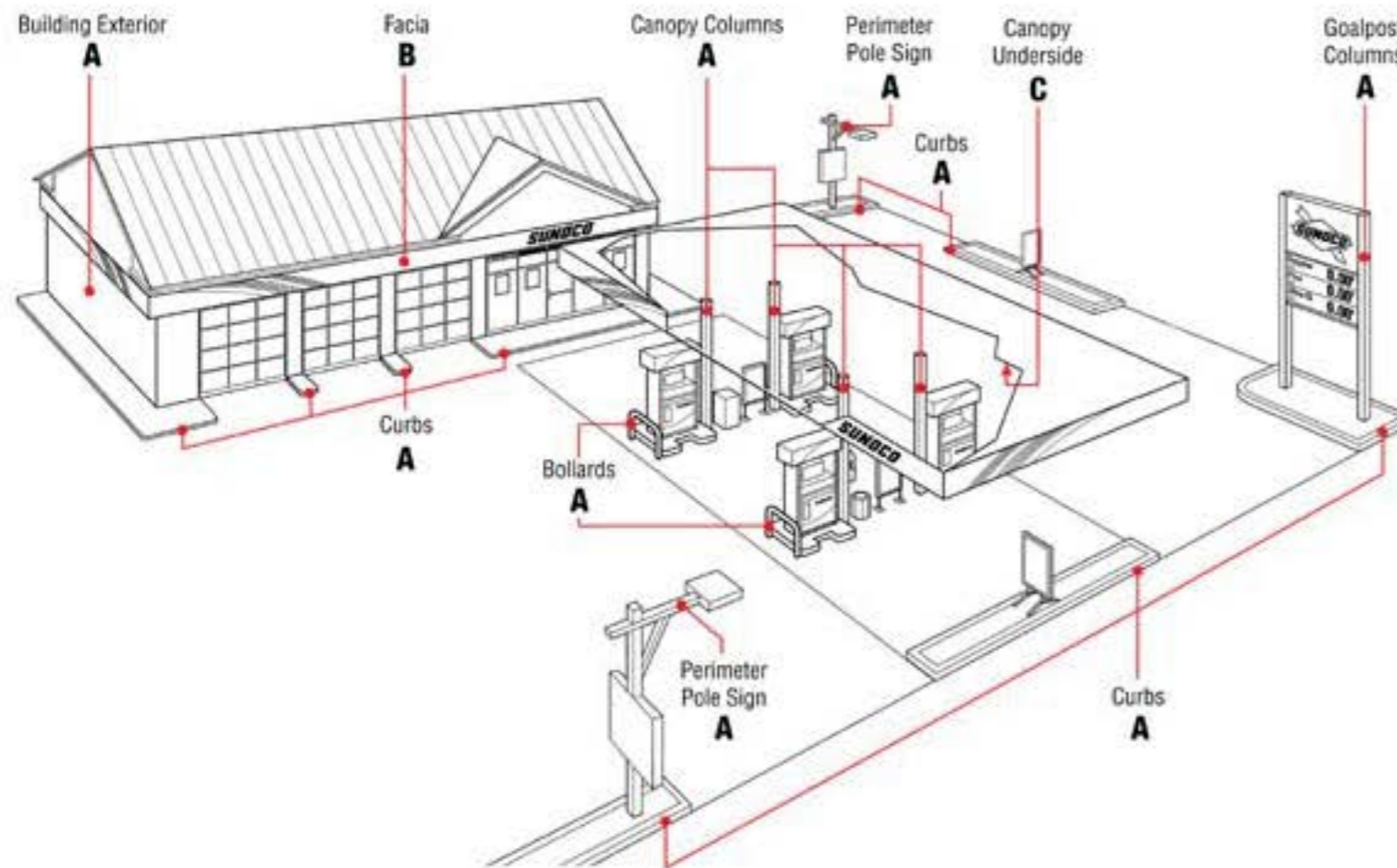
▶ RETURN TO **CANOPIES & ISLANDS** PAGE

**24' x 99'**  
**REPLACES 30' x 103'**



▶ **RETURN TO CANOPIES & ISLANDS PAGE**

## Paint Scheme Overview



### SHERWIN-WILLIAMS PAINT SPECIFICATIONS

- A Onyx Gray Sher-Cryl HPA Enamel B66-350 (Semi-Gloss)
- B Sapphire Blue Sher-Cryl HPA Enamel B66-350 (Semi-Gloss)
- C Sunoco White Sher-Cryl HPA Enamel B66-350 (Semi-Gloss)

**Note:** These paints are available at many Sherwin-Williams **Industrial/Commercial** stores. Please call ahead.